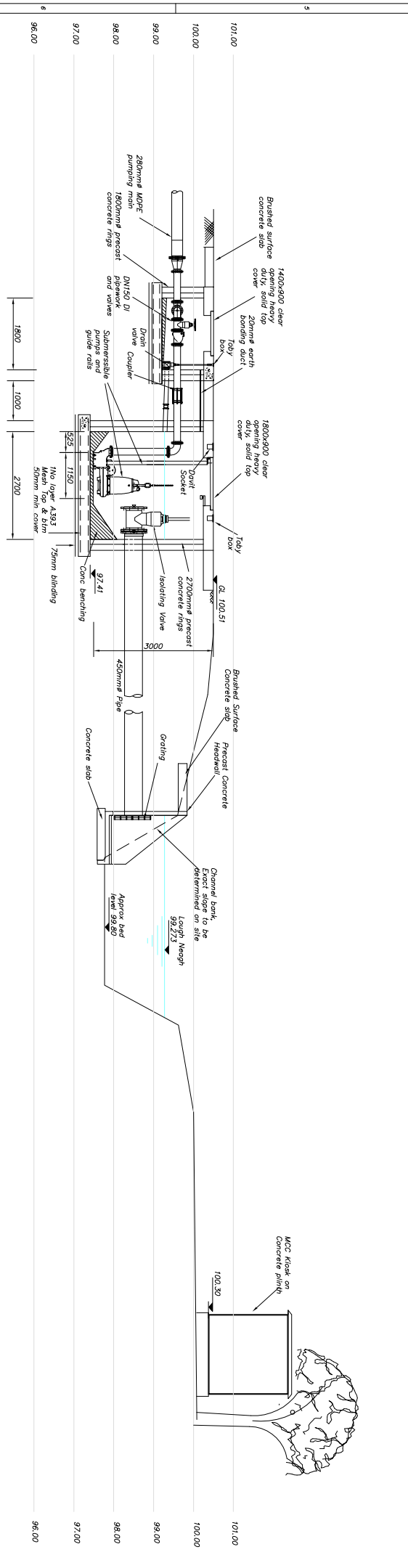
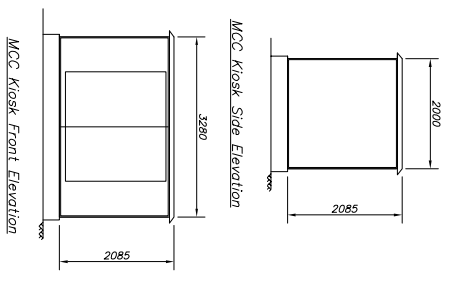


Plan



Section 1-1



**NOTES**

1. Structural concrete to be Grade C35/4 to BS 8007 unless noted otherwise.
2. Medium size of aggregate to be 20mm unless noted otherwise.
3. Blinding concrete to be Grade 15.
4. Pump guide rails to be agreed with pump manufacturer.
5. All dimensions in mm unless noted otherwise.
6. All levels to temporary Benchmark.
7. Dault sockets to be 65mm with maximum 1m operating radius for items to be raised and lowered at wet well SWL to be 500kg & so marked. Dault sockets to have 80mm dia plug.
8. 200mm earthing duct to be provided between wet well and valve structure. 40mm high.
9. Wet well cover to be 800 x 900mm clear opening. By Technocover or similar approved. Class C loading with integral safety grid & non bolted down central support to comply with manual handling regulations.
10. Valve chamber cover to be 1400 x 900mm clear opening. Technocover or similar approved. Class C loading with integral safety grid & non bolted down central support to comply with manual handling regulations.
11. Ladders to BS 5395 and all components to be hot dip galvanized steel. Ladders to be secured to concrete with section with form flat webs and secured to concrete with 2m centres and to give a minimum of 230 mm clearance to BS 5395 banking flange. Ladder to be positioned directly under manhole opening.
12. Construction will take place in close vicinity to deep water support excavations and keep excavations dry.
13. This drawing is not to be used for construction.

**PLANNING DRAWING**

Project Title:  
**ROSE ENERGY POWER PLANT  
 LOUGH NEAGH ABSTRACTION  
 RAW WATER PUMPING STATION  
 PUMPING STATION DETAILS**

Client/Name:	Rose Energy	Date:	Apr 09
Drawn By:	NS	Checked By:	WR
Approved By:	091023/GA/03	Scale:	1:500A1
Drawing Number:	091023/GA/03	Revision:	A