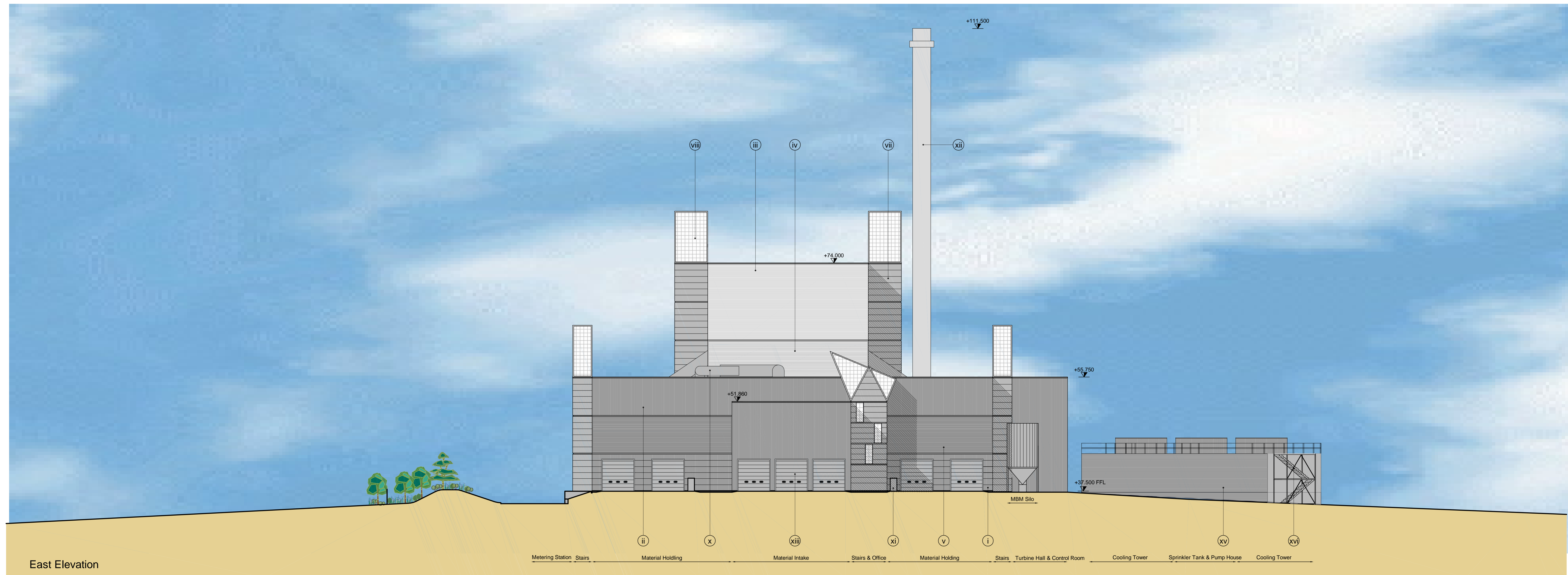
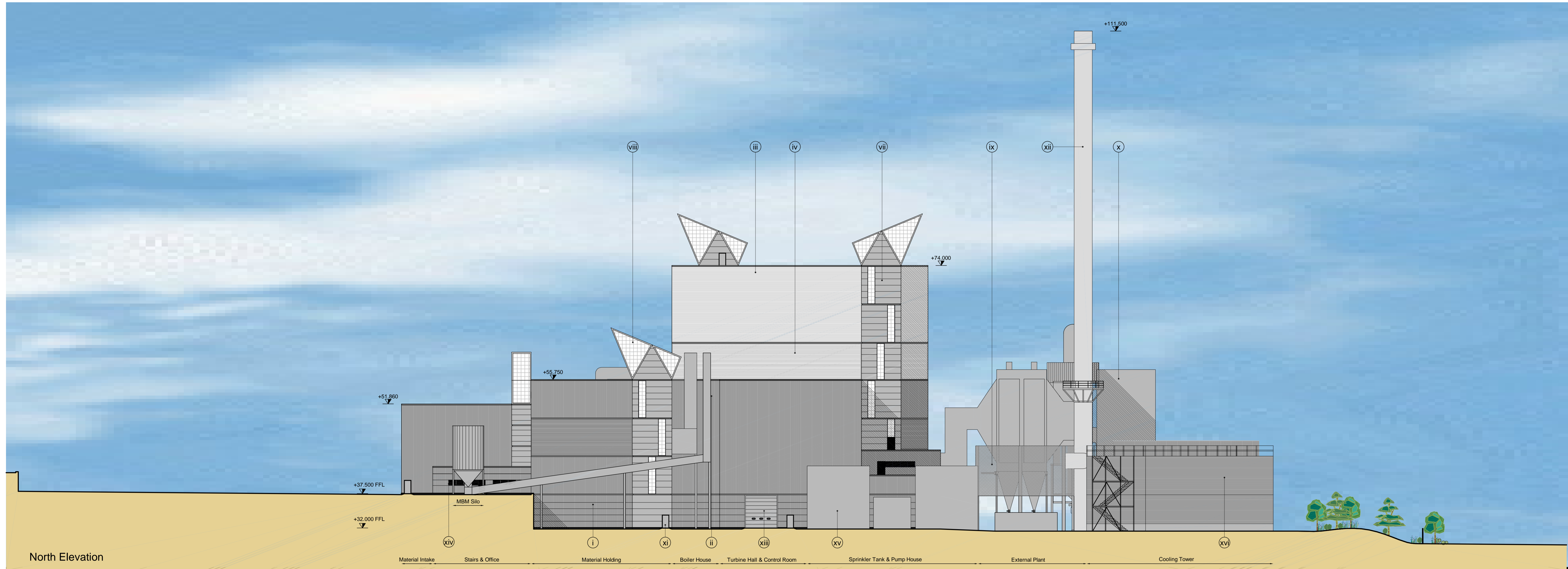


notes :

1. If this drawing has been received electronically it is the recipient's responsibility to print the document to the correct scale.
2. All dimensions are in millimetres unless stated otherwise. It is recommended that information is not scaled off this drawing.
3. This drawing should be read in conjunction with all other relevant drawings and specifications.

Key

- i Horizontally laid metal composite cladding panel, microrib profile, Corus Colourcoat HPS 200 Ultra Finish, Colour: Pure Grey
- ii Vertically laid metal built up cladding system, trapezoidal profile, Corus Colourcoat HPS 200 Ultra Finish, Colour: Pure Grey
- iii Horizontally laid metal built up cladding system, trapezoidal profile, Corus Colourcoat HPS 200 Ultra Finish, Colour: Hamlet
- iv Extruded aluminium architectural louvre system, polyester powder coated, Colour: Hamlet
- v Extruded aluminium architectural louvre system, polyester powder coated, Colour: Pure Grey
- vi Pressed metal framing Corus Colourcoat HPS 200 Ultra Finish, Colour: Orion
- vii Horizontally laid metal composite cladding panel, microrib profile, Corus Colourcoat HPS 200 Ultra Finish, Colour: Orion
- viii Kalwall transparent composite panel
- ix Perforated mesh metal screening with polyester powder coated finish, Colour: Metallic Grey
- x All exposed external steel to be galvanised
- xi Pedestrian doors to be Hormann Sentinel Door MZ-1 - or similar
Colour to match surrounding cladding
- xii Flue/stack to be painted light grey
- xiii Hormann Roller Shutter HR120 - or similar, Colour: To match surrounding cladding
- xiv Powder coated aluminium framed double glazing window, Karmel AB 620 series - or similar
Frame colour: RAL 7016
- xv Sprinkler Tanks & Pump House
- xvi Cooling Tower



For Planning Purposes

E Cladding and louvre colour updated.		WS	RS	25.03.09
rev	amendments	by	date	
<p>Sherwood House Sherwood Avenue Netherfield, Nottinghamshire NG24 1DQ</p> <p>T +44 (0) 1636 600 700 F +44 (0) 1636 600 690 W www.rpsgroup.com E rpsenquiries@rpsgroup.com</p>				
<p>Client</p>				
<p>Project Rose Energy Facility Glenavy</p>				
<p>Title Proposed Cladding Elevations North & East Elevations</p>				
Drawing Status	Date Created	Drawing Scale		
Preliminary	March 2008	1:250		
Project Leader	Drawn By	Initial Review		
AWY	IRD	RS		
<p>Drawing Number</p> <p>15562 / A0 / 110</p>				Rev
				E